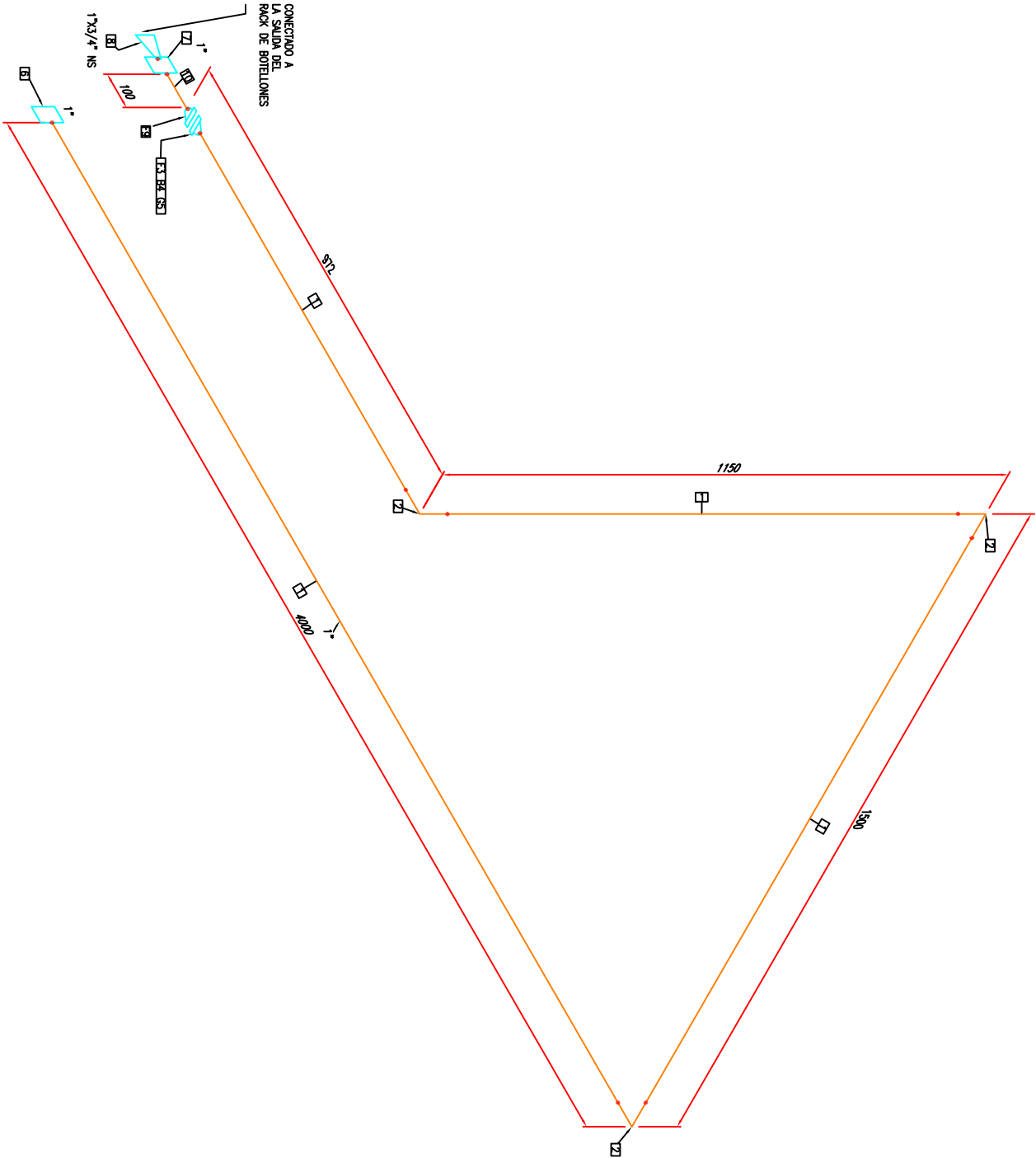


MATERIAL PARA CONSTRUCCION			
ID	CANT	ND	DESCRIPCION
1	7.4M	1"	TUBERIA SCH/160, PE AC, ASTM A-106 GR B, SIN COSTURA, ASME B36, 1M
2	3	1"	CODO DE 90° SW 6000LB FS, ASTM A105, ASME B16.5
3	1	1"	BRIDA, SW 2500LB RTJ SCH/160 ASTM 105, ASME B16.5
4	4	1 1/8"x180	ESPARAGOS, ASTM A193 GR. B7 - GALVANIZADO, ASME B18, 2.1 / TUERCAS, ASTM A194 GR. 2H - GALVANIZADOS, ASME B18, 2.2 (PARA DILECTRICA 160mm)
5	1	1"	UNTA ANILLO OVAL, R16 FENOQUICA
6	1	1"	CUPULA, 6000 LB, SW, ASME B16.11, ASTM A105
7	1	1"	CUPULA, NPPT, 6000LB, AL ASTM A182 GR. 304L, ASME B16, 11
8	1	3/4"x1"	CONECTOR 3x4" OD X 1" NPT., 275 BAR, 316
9	1	1"	BRIDA ROSCADA, 2500LB, RTJ, AL, ASTM A182 GR. 304L, ASME B16.5
10	1	1"	NIPLE, SCH/160, TBE, AST A-312 GR. 304L, L=100mm



PROJECT NAME:			
Interconexion y optimizacion de la linea de alta presion en las ESR's -EE.SS. (1ra fase)			
TITLE:			
Interconexion Rack de Botellones y ESR54			
DRAWING NUMBER:			
P227538-USIME1-ESR54-LT-0001			
LINE NO:	1"-NG-54817-CS1500G	REV:	UNIT:
JOB NUMBER:	N.T.S.	SCALE:	SHEET:
	1	OF	1
			REV:
			0